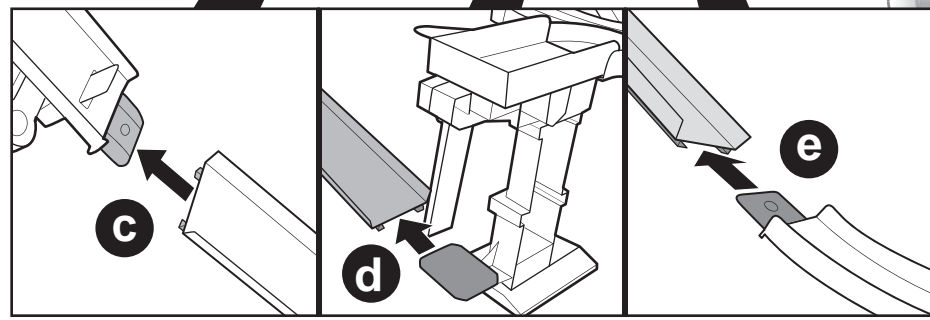
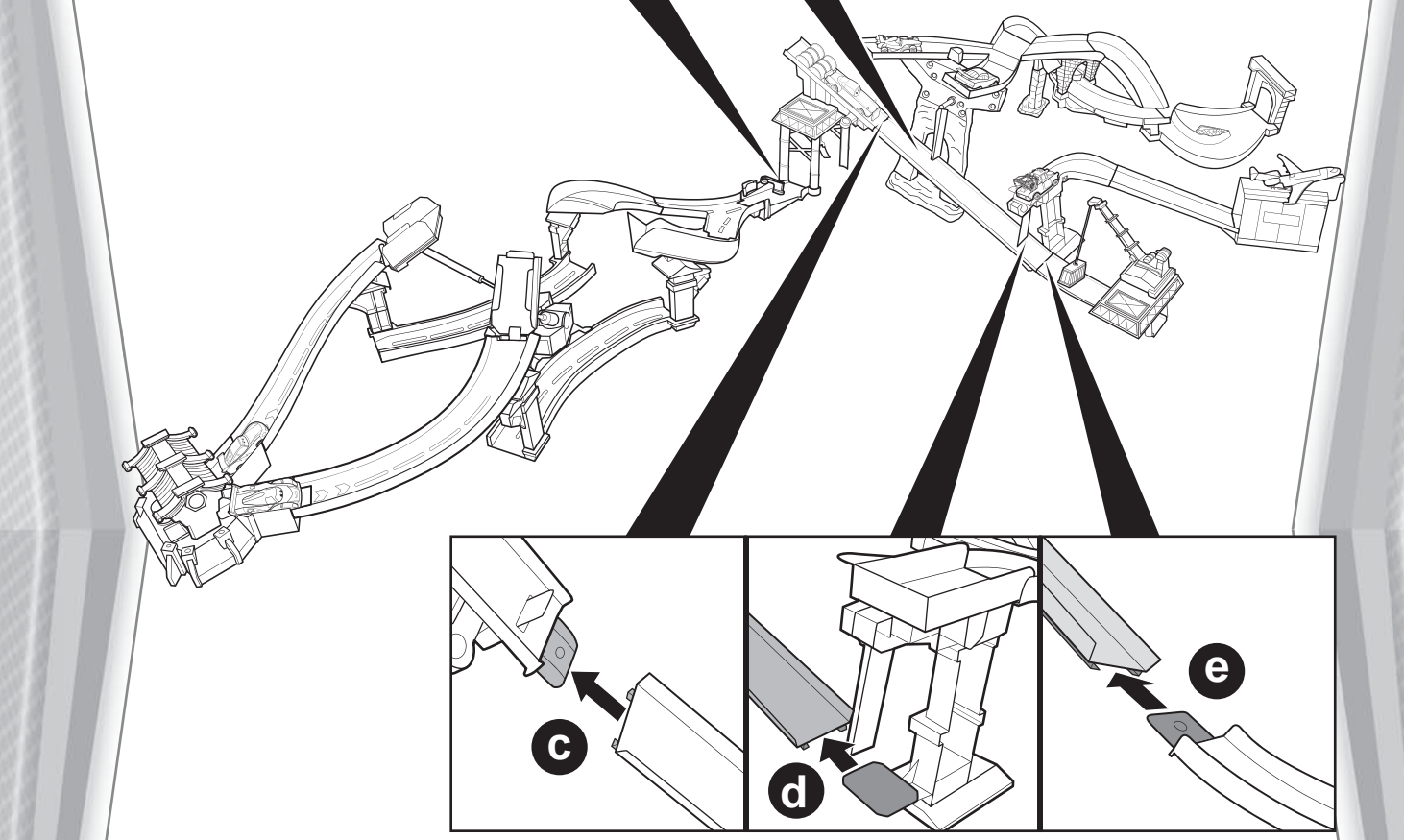
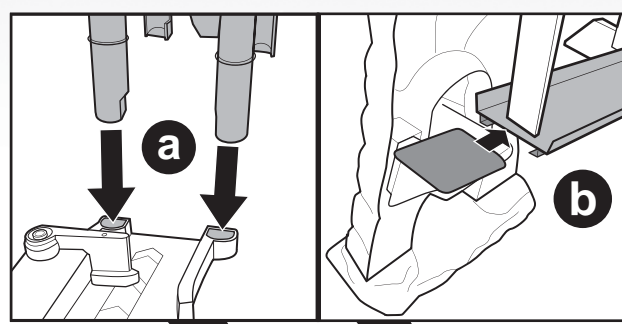


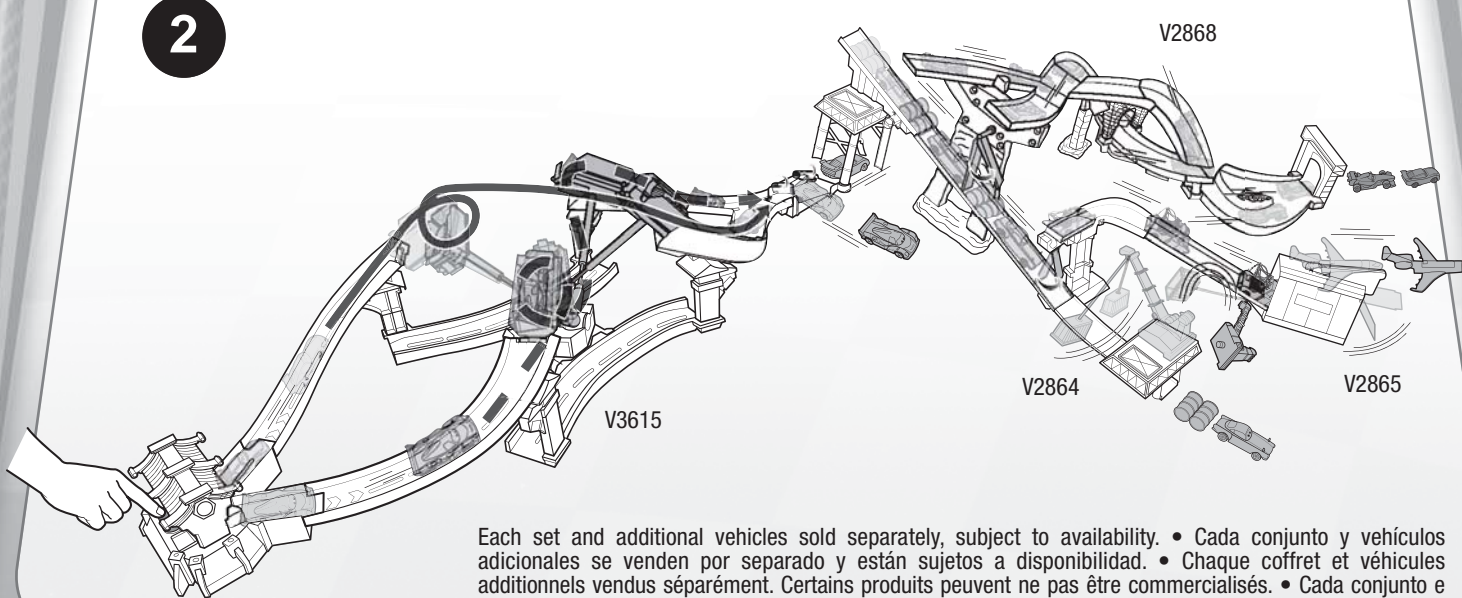
CONNECT & PLAY  
CONECTALOS Y JUEGA  
RACCORDER ET JOUER  
CONECTE E BRINQUE

CONNECT ALL 4 SETS TO CREATE A CHAIN REACTION! • ¡CONECTA LOS 4 CONJUNTOS PARA CREAR UNA REACCIÓN EN CADENA! • RACCORDER LES 4 COFFRETS DE JEU POUR CRÉER UNE RÉACTION EN CHAÎNE! • CONECTE OS 4 CONJUNTOS PARA CRIAR UMA REACÇÃO EM CADEIA!

1



2



Each set and additional vehicles sold separately, subject to availability. • Cada conjunto y vehículos adicionales se venden por separado y están sujetos a disponibilidad. • Chaque coffret et véhicules additionnels vendus séparément. Certains produits peuvent ne pas être commercialisés. • Cada conjunto e veículos adicionais são vendidos separadamente, sujeitos à disponibilidade.

4 of 4 page

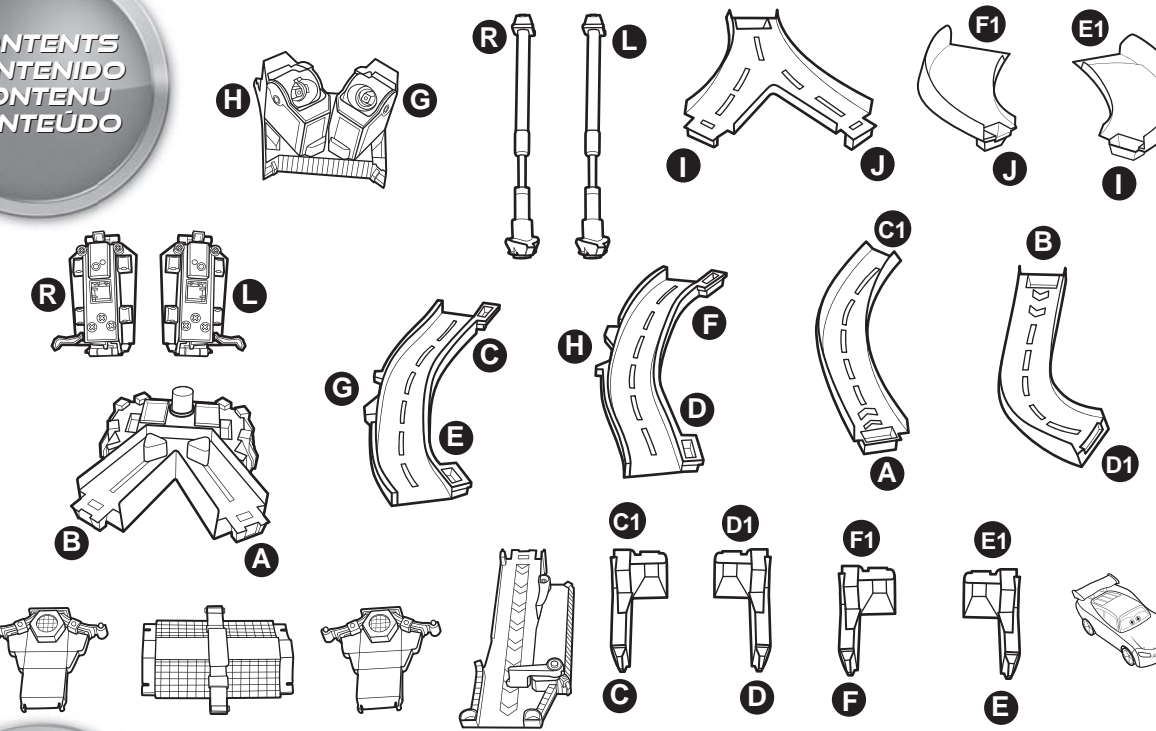


# INSTRUCTIONS INSTRUCCIONES MODE D'EMPLOI INSTRUÇÕES

4+

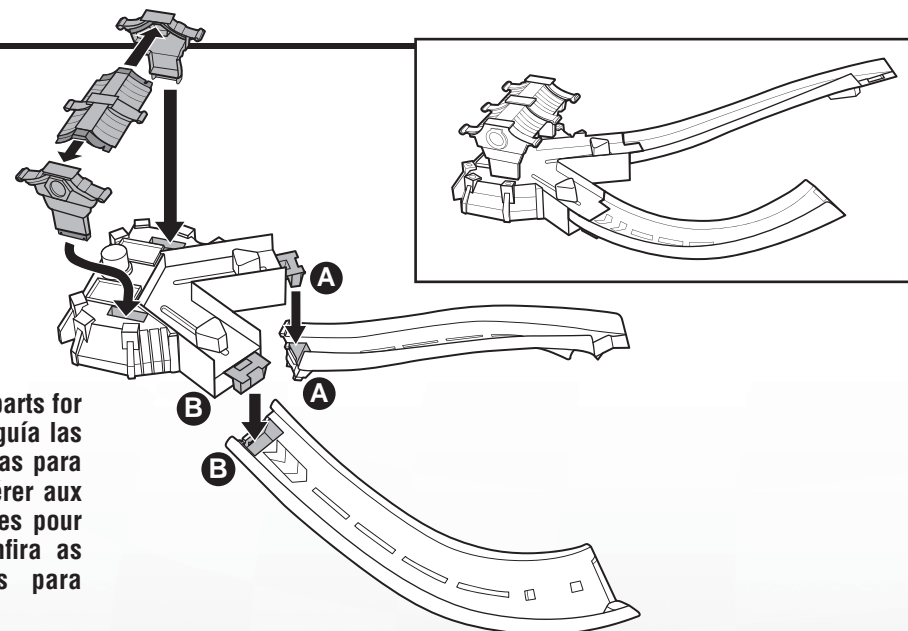
Please keep these instructions for future reference as they contain important information. • Guardar estas instrucciones para futura referencia, ya que contienen información de importancia acerca de este producto. • Conserver ce mode d'emploi pour s'y référer en cas de besoin car il contient des informations importantes. • Por favor, guarde estas instruções para futura referência, pois contém informações importantes.

CONTENTS  
CONTENIDO  
CONTENU  
CONTEÚDO



ASSEMBLY  
MONTAJE  
ASSEMBLAGE  
MONTAGEM

1

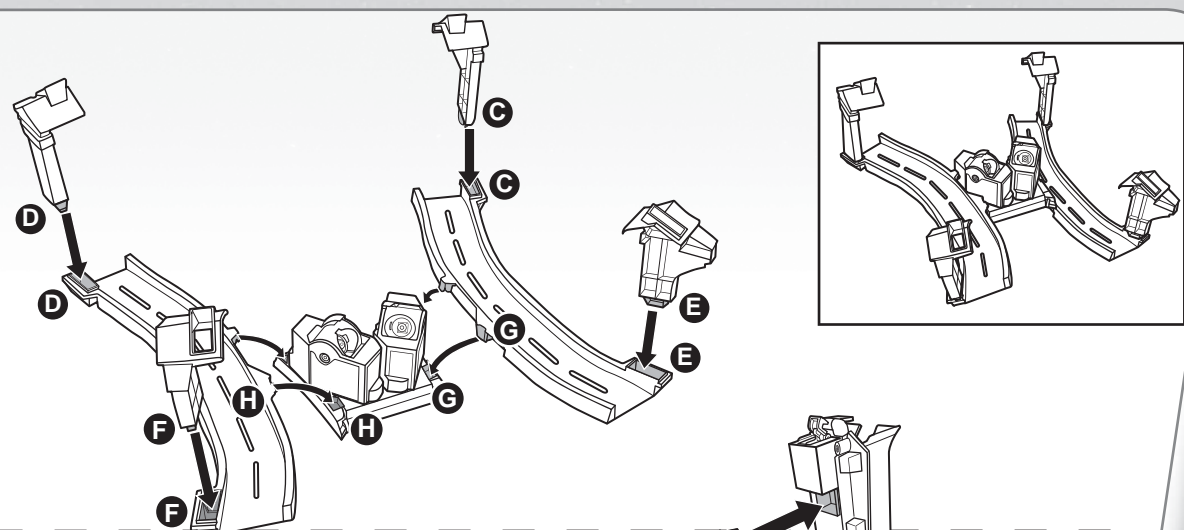


Refer to moulded letters on parts for easy assembly. • Usa como guía las letras moldeadas en las piezas para facilitar el montaje. • Se référer aux lettres indiquées sur les pièces pour faciliter l'assemblage. • Confira as letras moldadas nas peças para montar com mais praticidade.

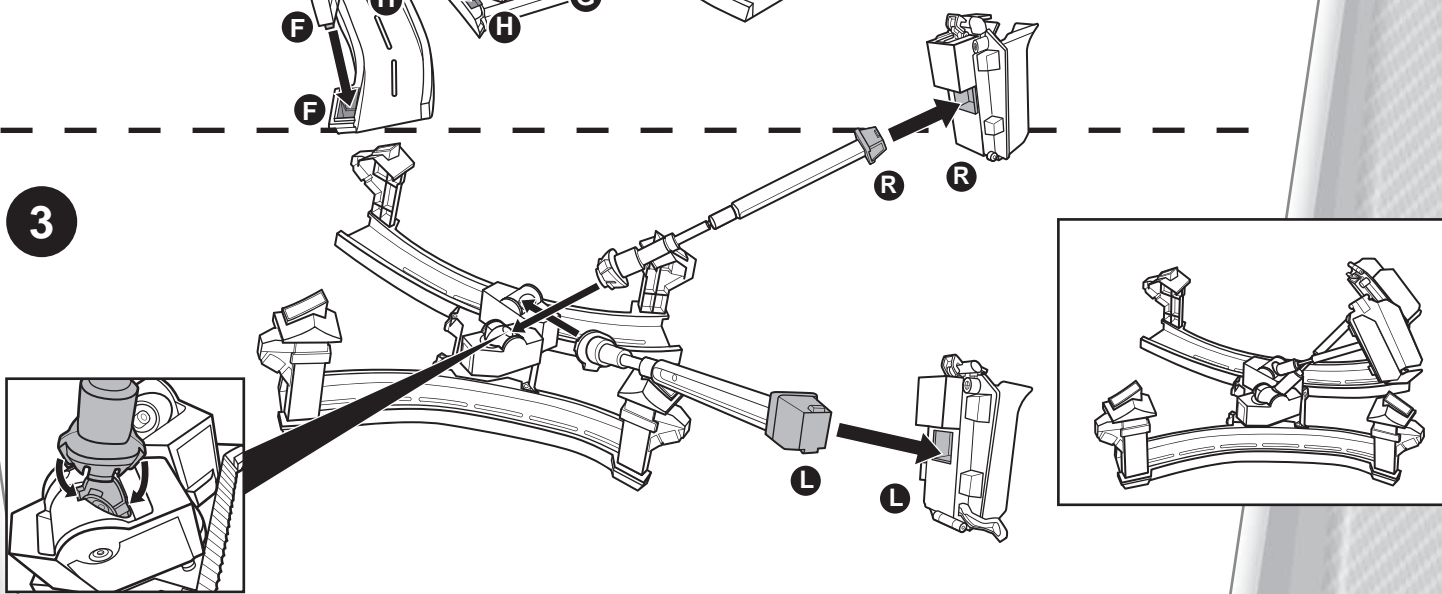
© 2010 Mattel, Inc. All Rights Reserved. Tous droits réservés.  
Mattel, Inc. 636 Girard Avenue, East Aurora, NY 14052, U.S.A. Consumer Relations 1-800-524-8697. Mattel Canada Inc. Mississauga, Ontario L5R 3W2. You may call us free at 1-800-524-8697. Mattel Australia Pty. Ltd. Richmond, Victoria, 3121. Consumer Advisory Service - 1300 135 312. Mattel East Asia Ltd. Room 1106, South Tower, World Finance Centre, Harbour City, Tsimshatsui, HK, China. Dimport & Diedarkan Oleh: Mattel SEA Ptd Ltd. (993532-P) Lot 13.5, 13th Floor, Menara Lien Hoe, Persiaran Tropicana Golf Country Resort, 47410 PJ, Tel: 03-78803817, Fax: 03-78803867. Mattel U.K. Ltd. Vanwall Business Park, Maidenhead SL6 4UB. Importado y distribuido por Mattel de México, S.A. de C.V. Insurgentes Sur # 3579, Torre 3, Oficina 601, Col. Tlalpan, Delegación Tlalpan, CP. 14020, México, D.F. R.F.C. MME-920701-NB3. Tels. 59-05-51-00 Ext. 5206 ó 01-800-463-59-89. Mattel Chile, S.A., Avenida Américo Vespucio 501-B, Quilicura, Santiago, Mattel de Venezuela, C.A., RIF. J301596439, Ave. Mara, C.C. Macaracuay Plaza, Torre B, Piso 8, Colinas de la California, Caracas 1071. Mattel Argentina, S.A., Cuneipay 1186, (1407) - Villa Adelina, Buenos Aires. Mattel Colombia, S.A., calle 12347-07 P5, Bogotá. Mattel Perú, S.A., Av. República de Panamá N° 3531, Oficina 1003, San Isidro, Lima, Perú. RUC: 20425853865. Reg. Importador: 01720-10-JUE-DIGESA. Importado por : Mattel do Brasil Ltda. - CNPJ : 54.558.002/0008-04 - Av. Tenente Marques, 1246 - Sala 02 - 2º Andar - 07770-000 - Polvilho - Cajamar - SP - Brasil Serviço de Atendimento ao Consumidor (SAC): 0800-500780 - sac@mattel.com. Mattel France, 21733 rue d'Antony, BP90145, 94523 Rungrig, Cedex N° Indigo 0 825 00 25 (0,15 € TTC/mn) ou www.allmattel.com. Mattel España, S.A., Arbaú 200, 08036 Barcelona. cservice.spain@mattel.com Tel: 902.20.30.10 http://www.service.mattel.com/es. Mattel Portugal Lda., Av. da República, Nº 90/96, 2º andar Fração 2, 1600-206 Lisboa. Tel. Número Verde: 800 10 10 71  
© Disney/Pixar service.mattel.com V3615-082462

1 of 4 page

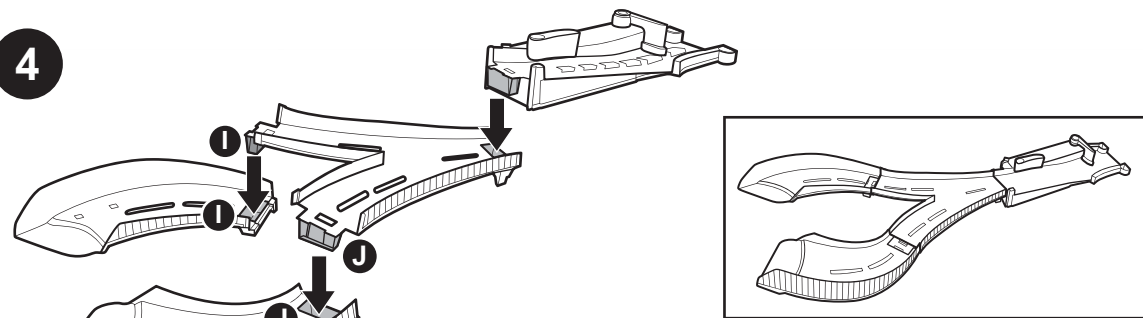
2



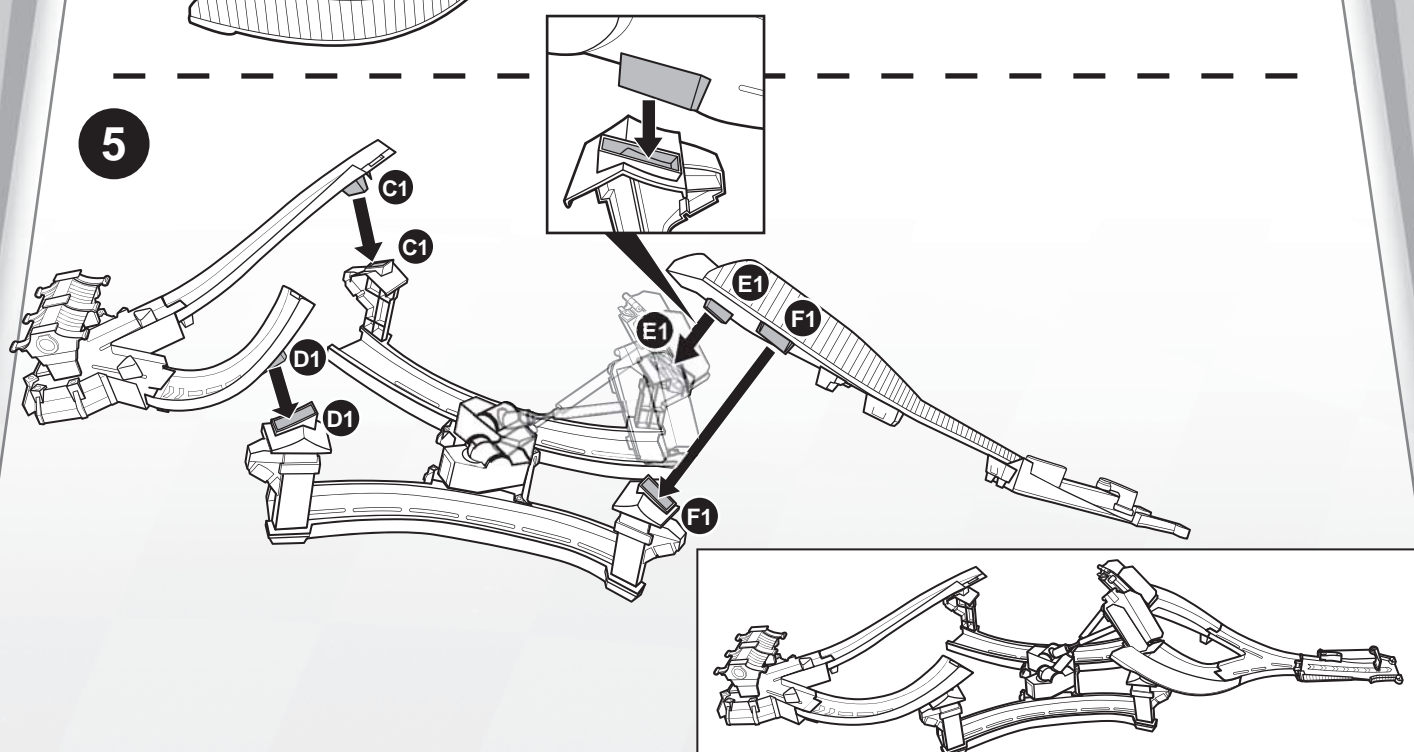
3



4



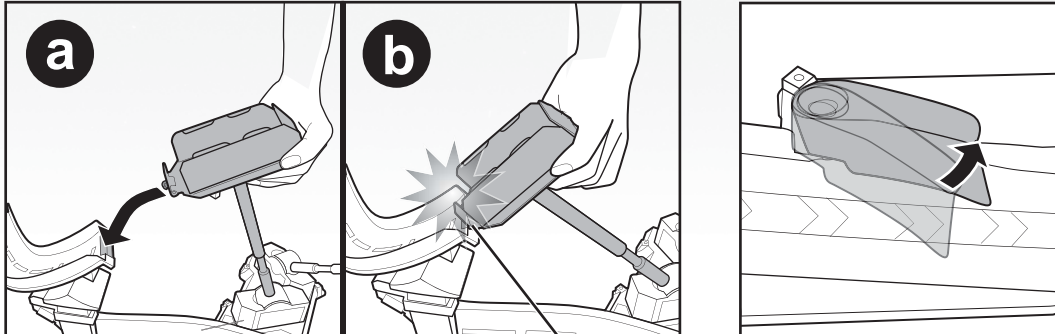
5



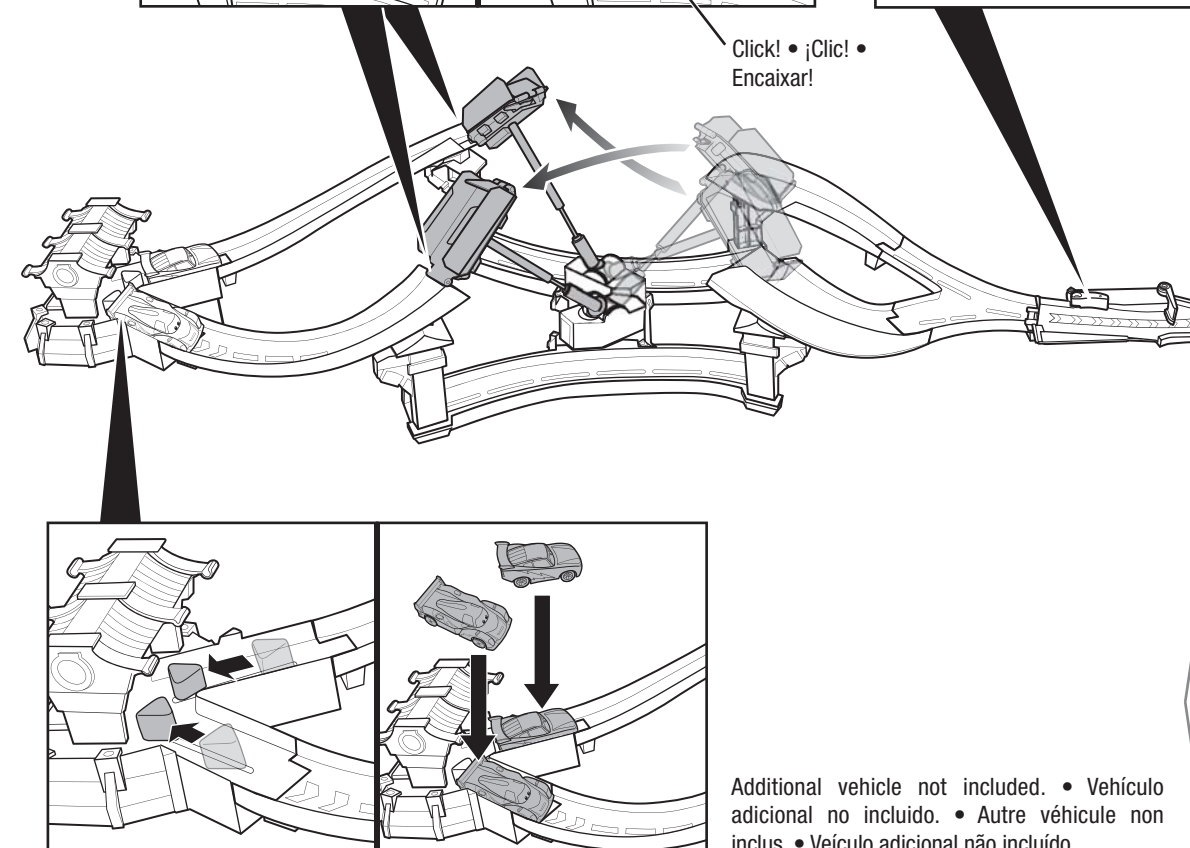
3 of 4 page

TO PLAY  
PARA JUGAR  
POUR JOUER  
COMO  
BRINCAR

1

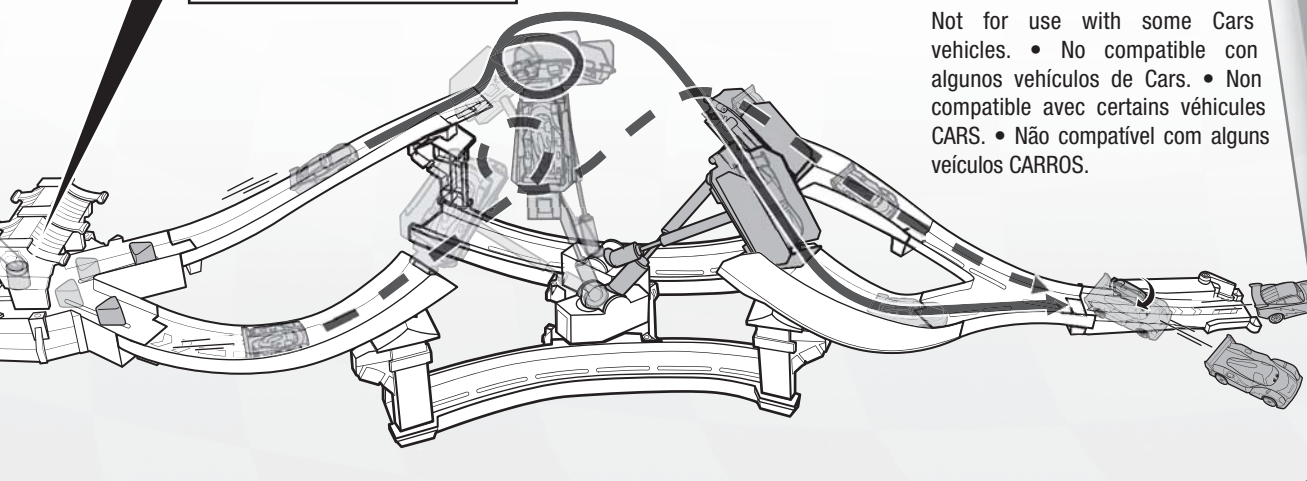
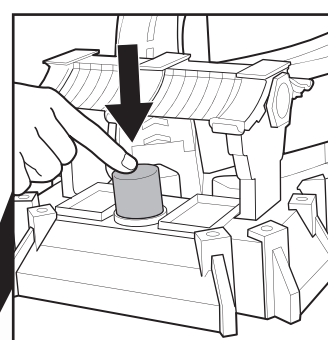


Click! • ¡Clic! •  
Encaixar!



Additional vehicle not included. • Vehículo adicional no incluido. • Autre véhicule non inclus. • Veículo adicional não incluído.

2



Not for use with some Cars vehicles. • No compatible con algunos vehículos de Cars. • Non compatible avec certains véhicules CARS. • Não compatível com alguns veículos CARROS.

3 of 4 page

INSTRUCTION SHEET SPECIFICATIONS	
Toy No.:	CARS 2 TRACKS SPOKE TRACKSET
Part No.:	V3615
Trim Size:	082462
Folded Size:	A3
Type of Fold:	accordion
# colors:	One
Colors:	Black
Paper Stock:	White Offset
Paper Weight:	70 lb.
EDM No.:	001a

